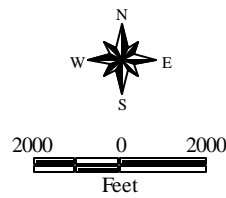
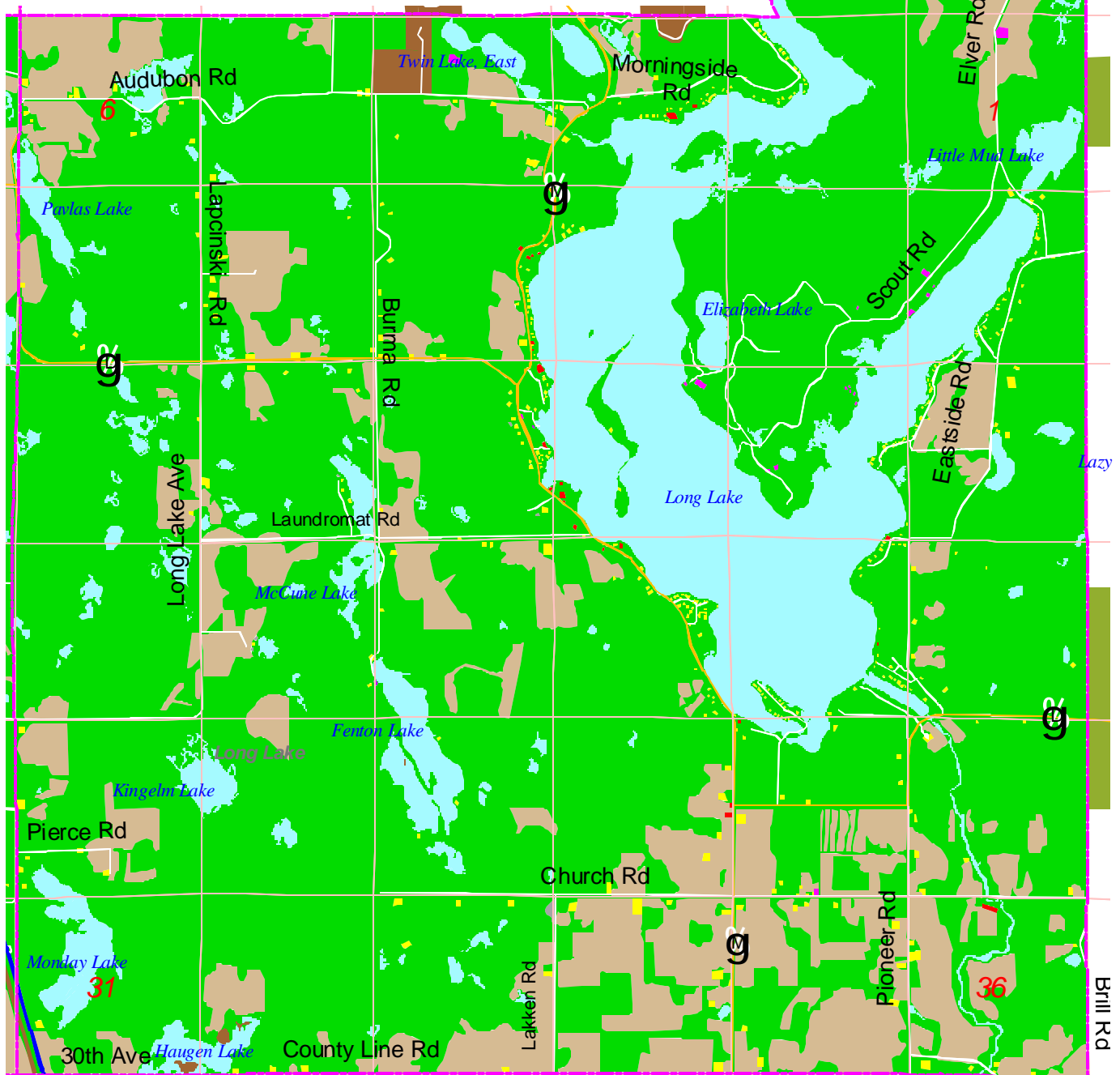


Map 8.1

Generalized Existing Land Use Town of Long Lake



- | | | |
|------------------|---------------------------------|-------------------|
| Federal Highways | Residential | Federal Lands |
| State Highways | Mobile Home Park | Industrial Forest |
| County Roads | Commercial | County Forest |
| Local Roads | Industrial | State Land |
| Town Boundary | Communication/Utilities | |
| Lakes | Governmental/Institutional | |
| Rivers & Streams | Park & Recreation | |
| | Open Space | |
| | Agriculture | |
| | Woodlands & Other Natural Areas | |



Source: Northwest Regional Planning Commission, 2002.